

LCG

Election Monitor

Lombardo Consulting Group

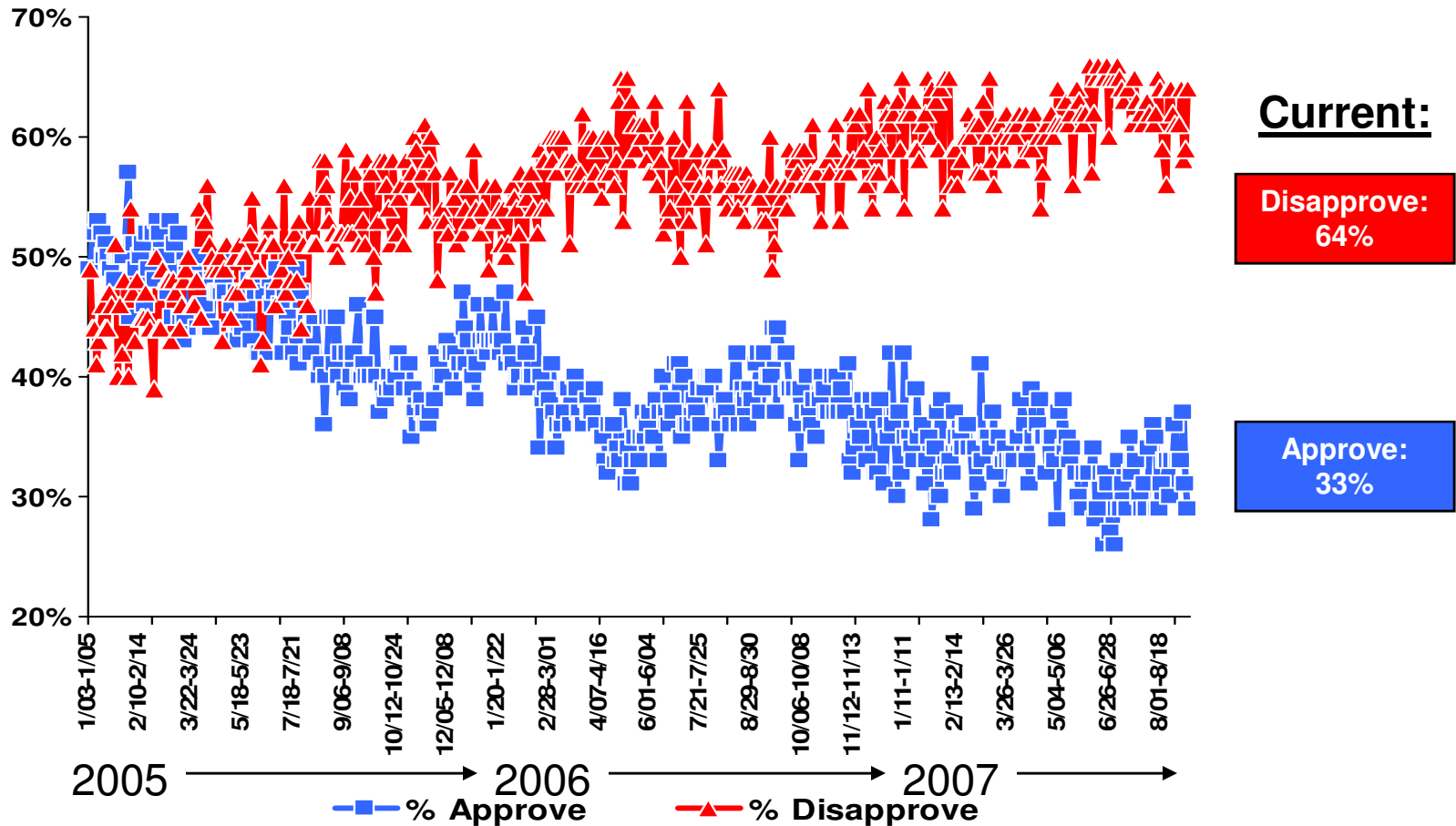
Election Monitor ©

A Compilation of Publicly-Available Survey Data

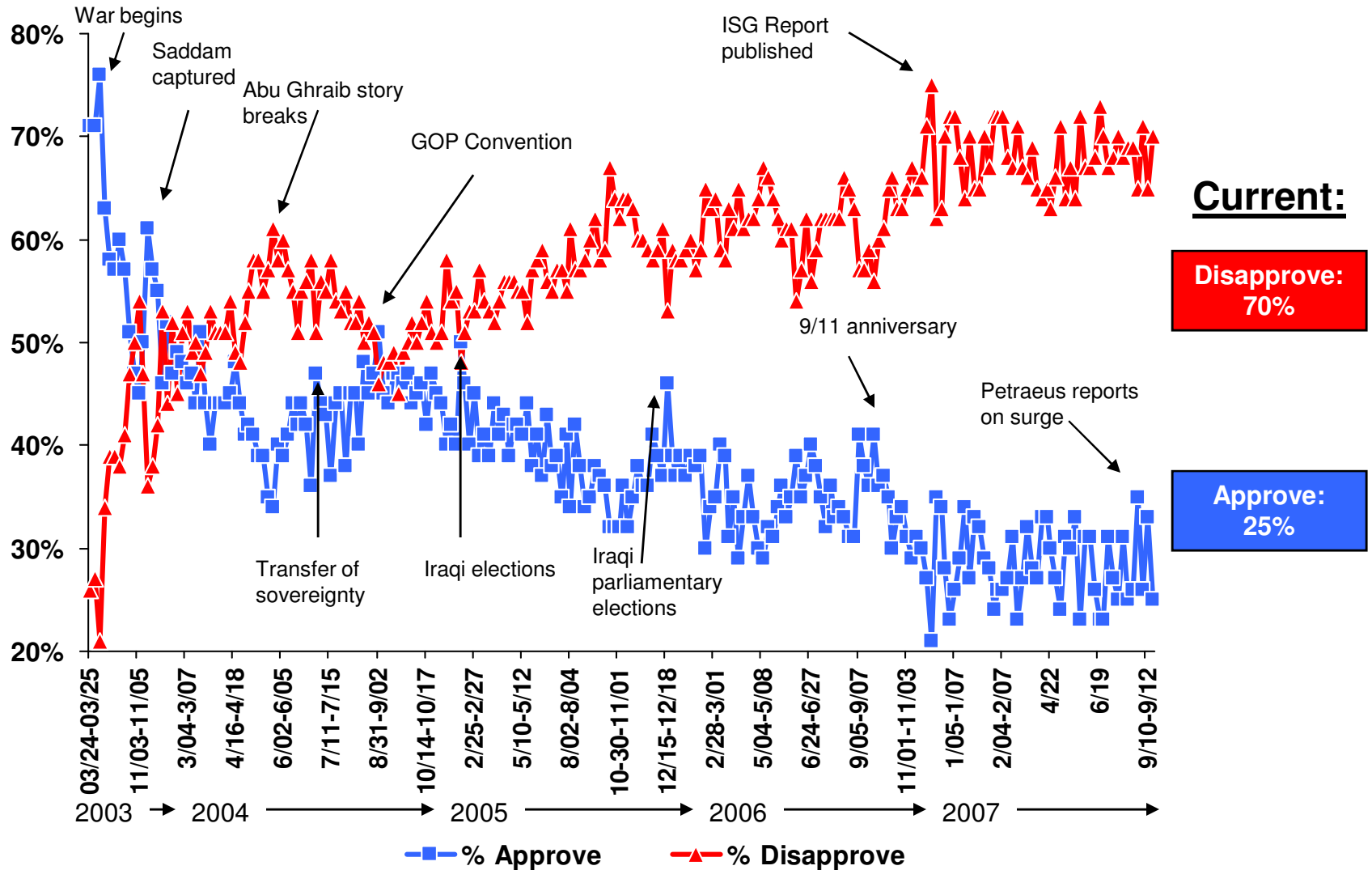
January 1st, 2005 - Present

Lombardo Consulting Group
1850 M Street NW
Suite 430
Washington DC 20036
www.lombardoconsultinggroup.com

George W. Bush Job Approval Rating



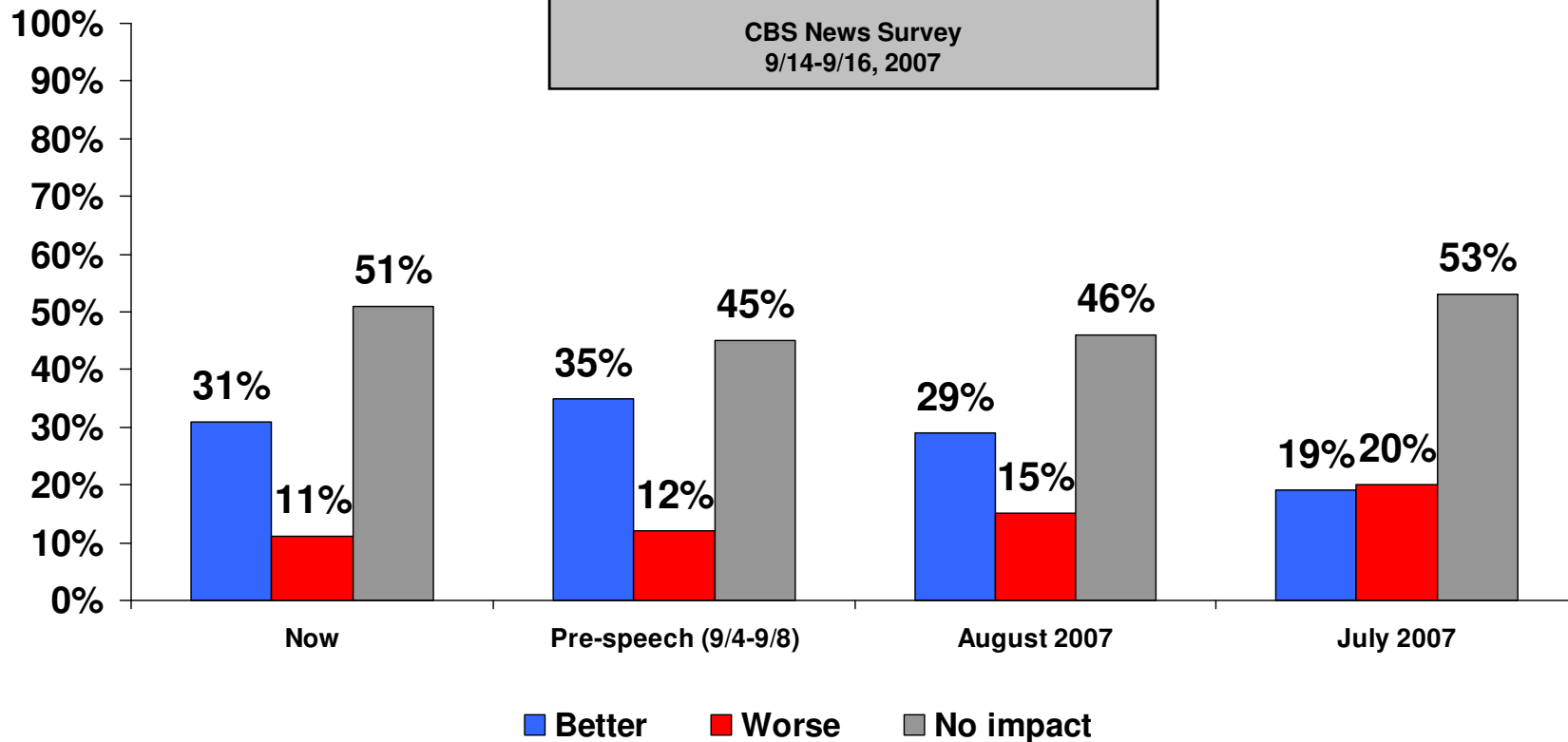
George W. Bush Job Approval on Iraq (2003-Present)



Impact of the Surge

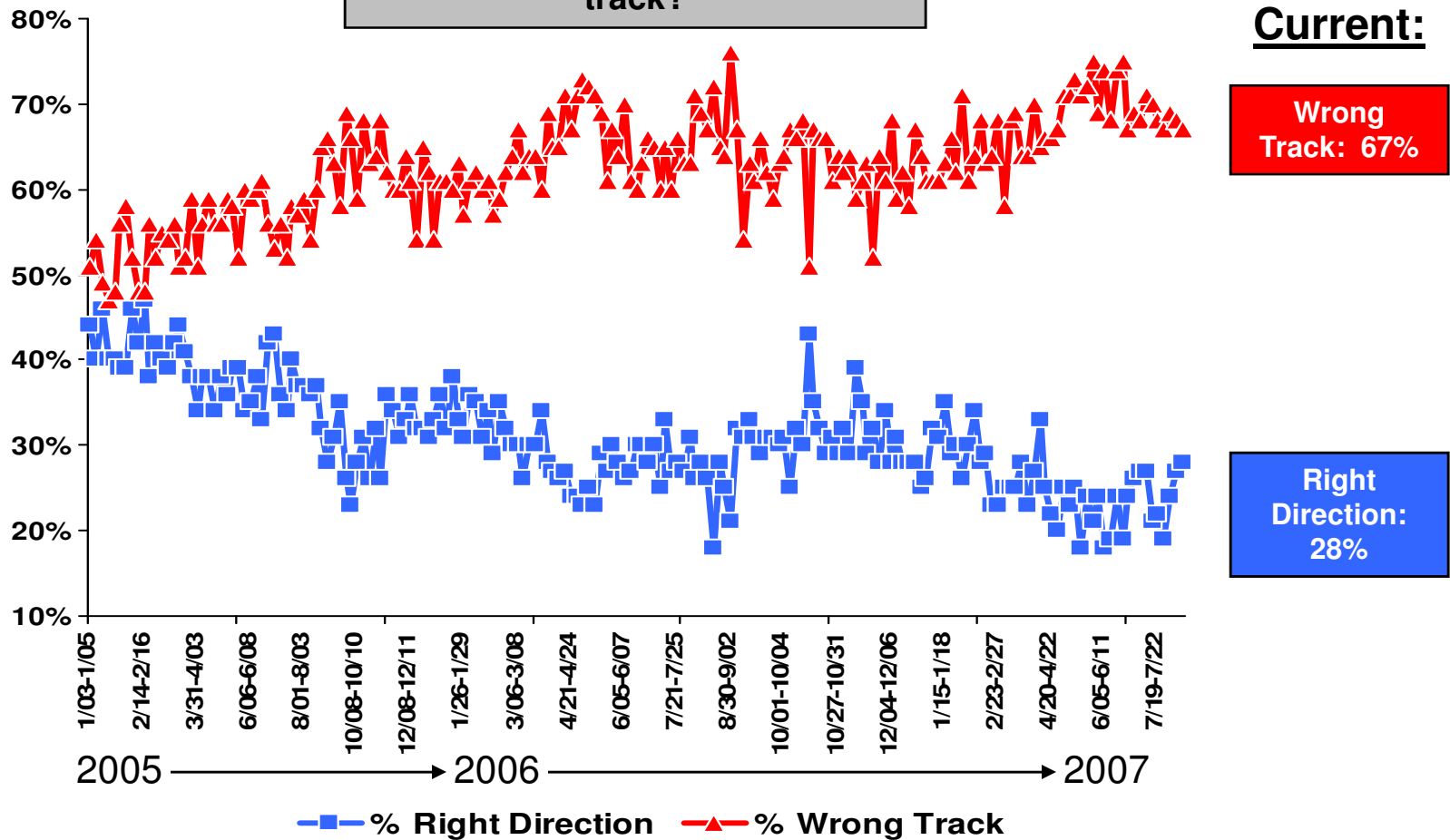
Do you think that the surge in US troop levels in Iraq has made things better, made things worse or has it had no impact?

CBS News Survey
9/14-9/16, 2007



Direction of the Country

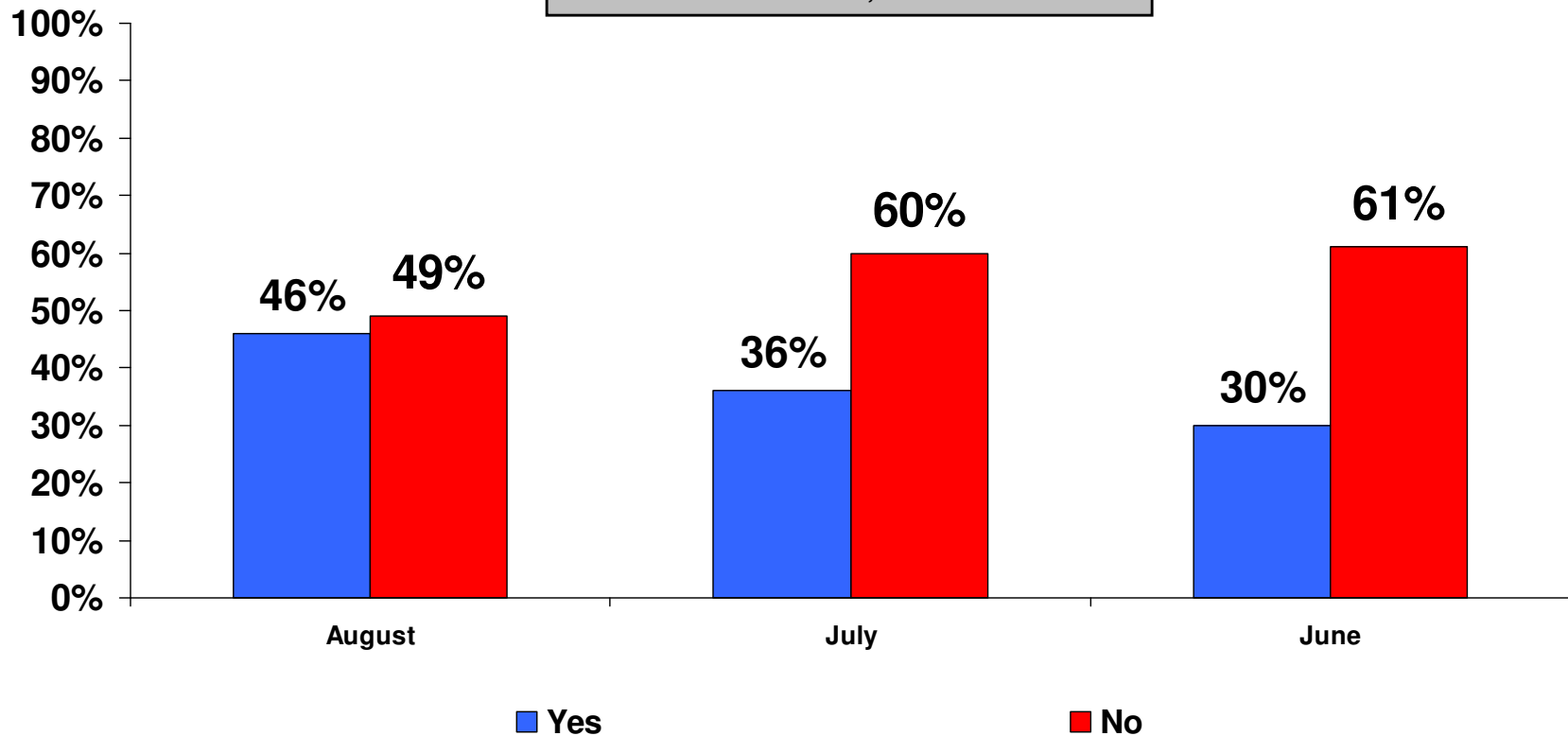
Is the country headed in the right direction or off on the wrong track?



Election Monitor Perspective: Candidate Satisfaction - GOP

Are you satisfied with the Republican candidates for President?

CBS News Survey
8/08-8/12, 2007



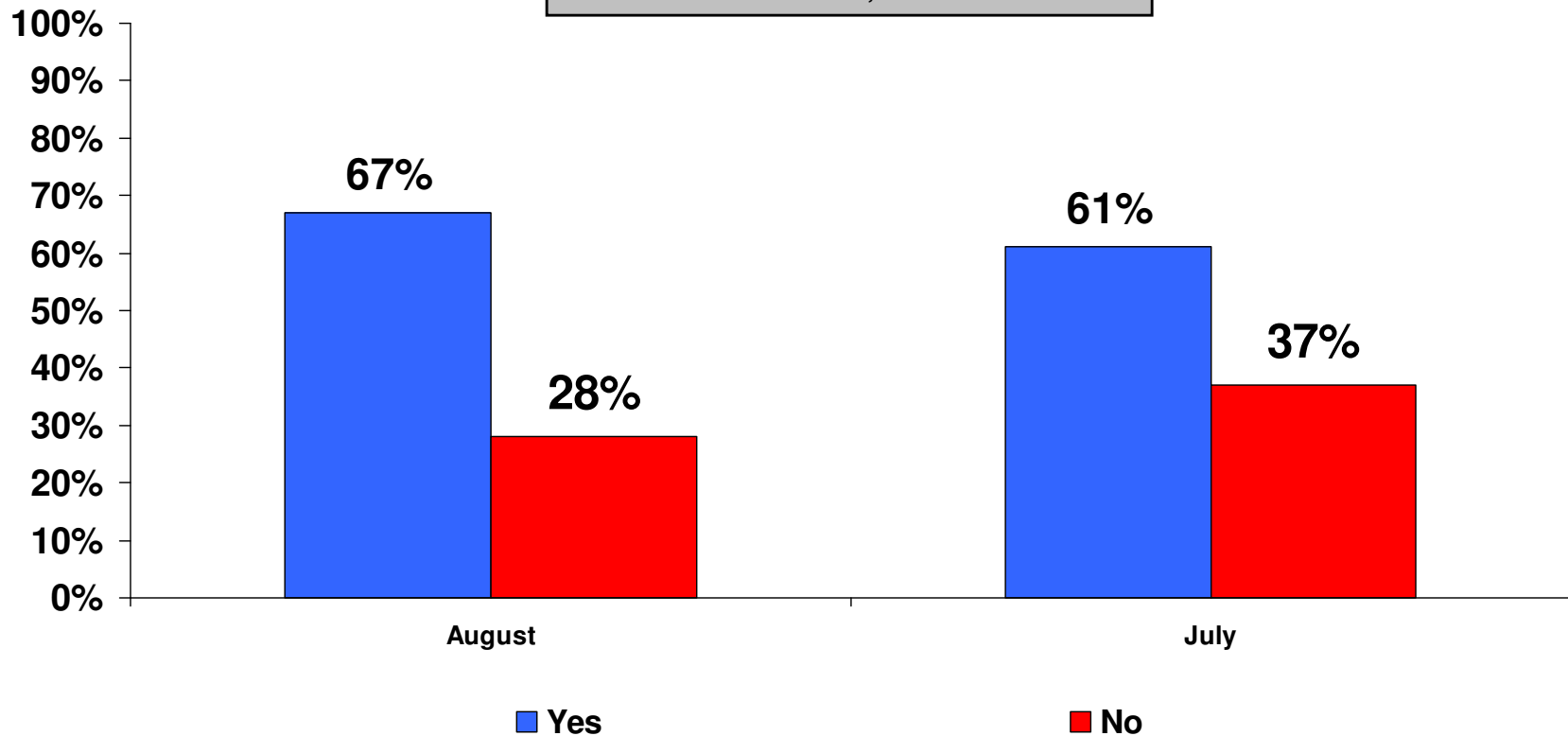
Election Monitor Retrospective: GOP Candidate Favorability

| Opinions of the Republican Presidential Candidates CBS News Surveys (among GOP primary voters) | | | | | | | | | | | | |
|--|----------|-----|------|----------|-----|------|--------|-----|------|--------|-----|------|
| | Giuliani | | | Thompson | | | Romney | | | McCain | | |
| | Sept | Aug | July | Sept | Aug | July | Sept | Aug | July | Sept | Aug | July |
| Favorable | 40% | 48% | 55% | 28% | 24% | 32% | 25% | 27% | 22% | 38% | 36% | 39% |
| Unfavorable | 14% | 14% | 13% | 5% | 7% | 4% | 10% | 9% | 9% | 28% | 26% | 31% |
| Undecided/DK | 46% | 37% | 31% | 67% | 67% | 64% | 66% | 34% | 69% | 35% | 39% | 30% |

Election Monitor Perspective: Candidate Satisfaction - Democrats

Are you satisfied with the Democratic candidates for President?

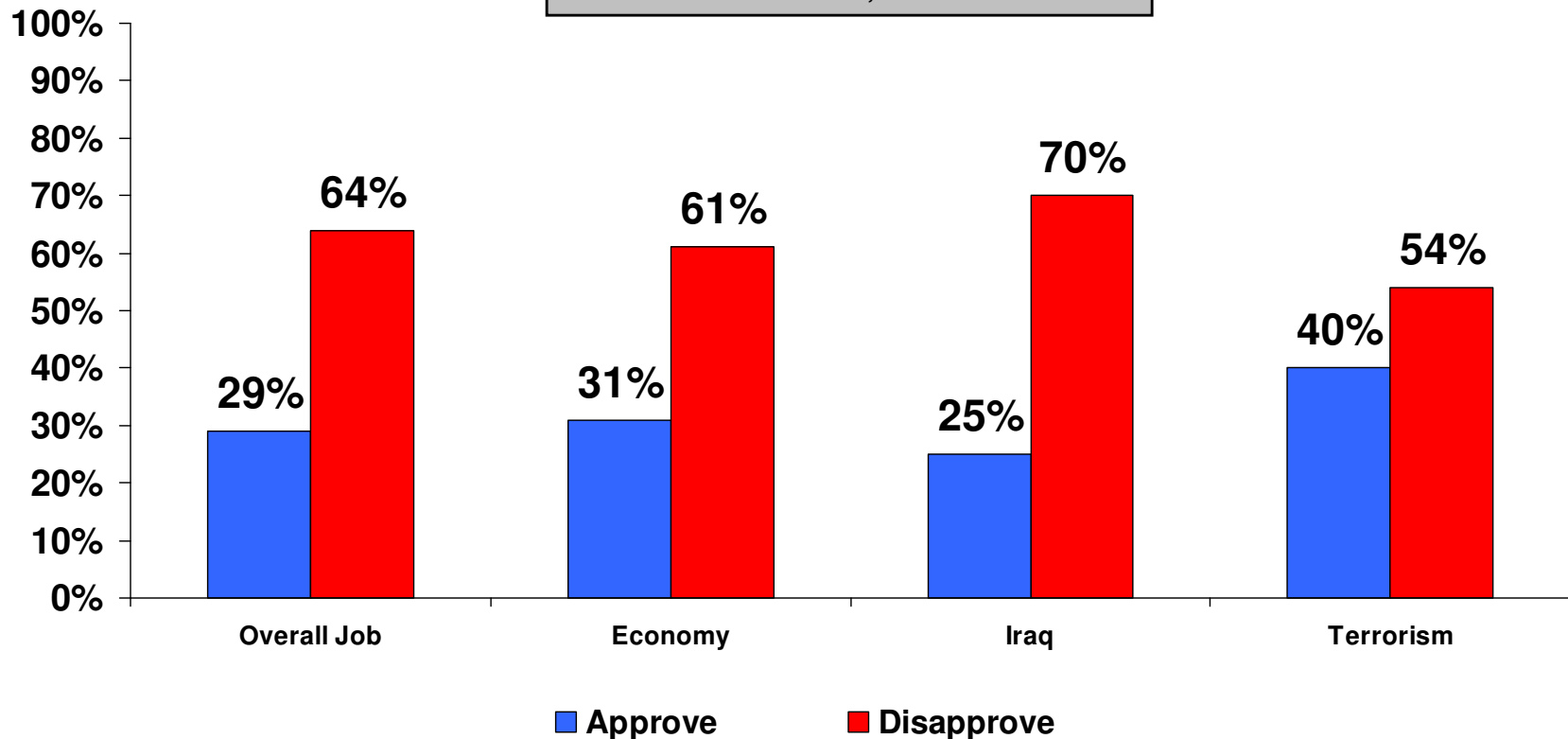
CBS News Survey
8/08-8/12, 2007



Election Monitor Perspective: Presidential Approval

Do you approve or disapprove of the way President Bush is handling...

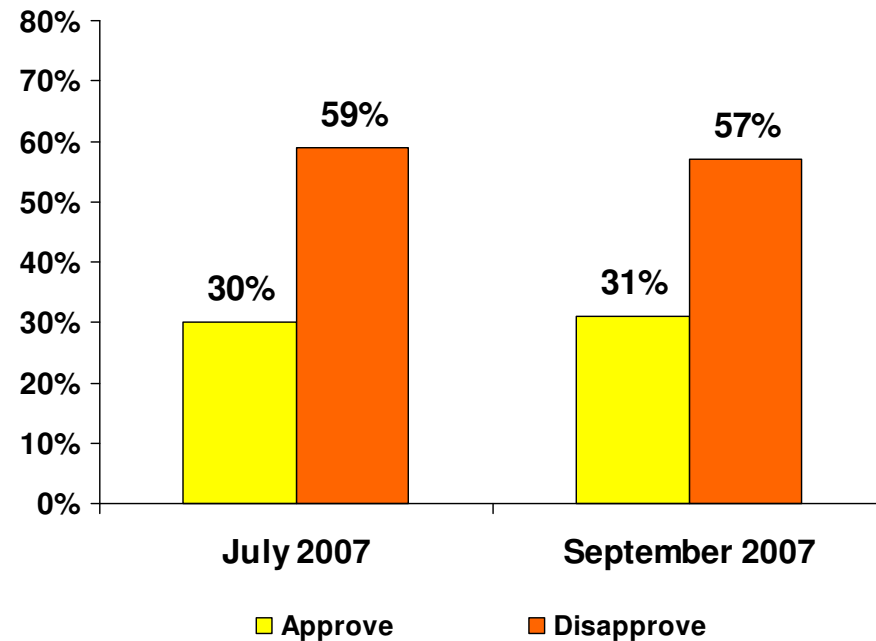
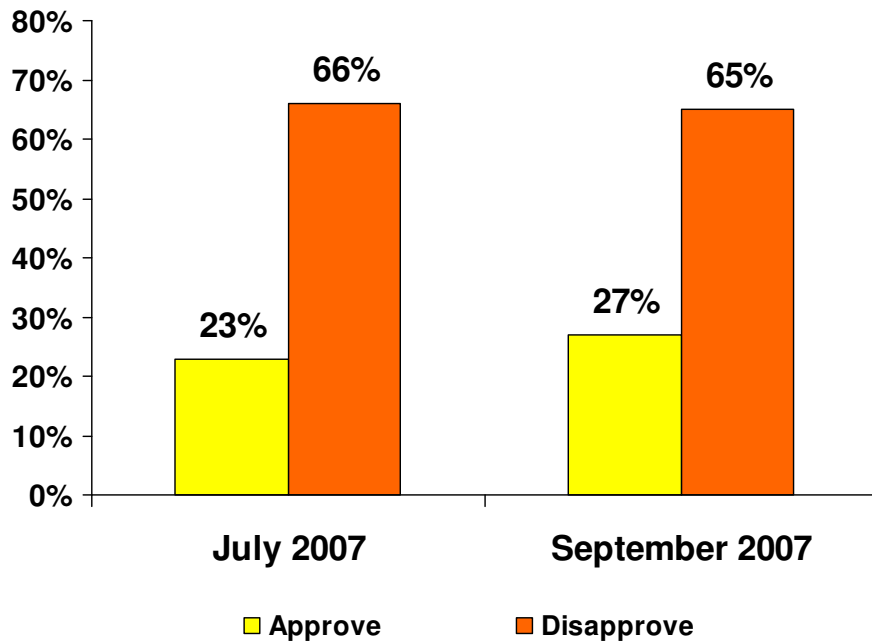
CBS News Survey
9/14-9/16, 2007



Election Monitor Perspective: Congressional Job Approval

Do you approve or disapprove of the way the U.S. Congress is doing its job?
CBS News Survey
9/14-9/16, 2007

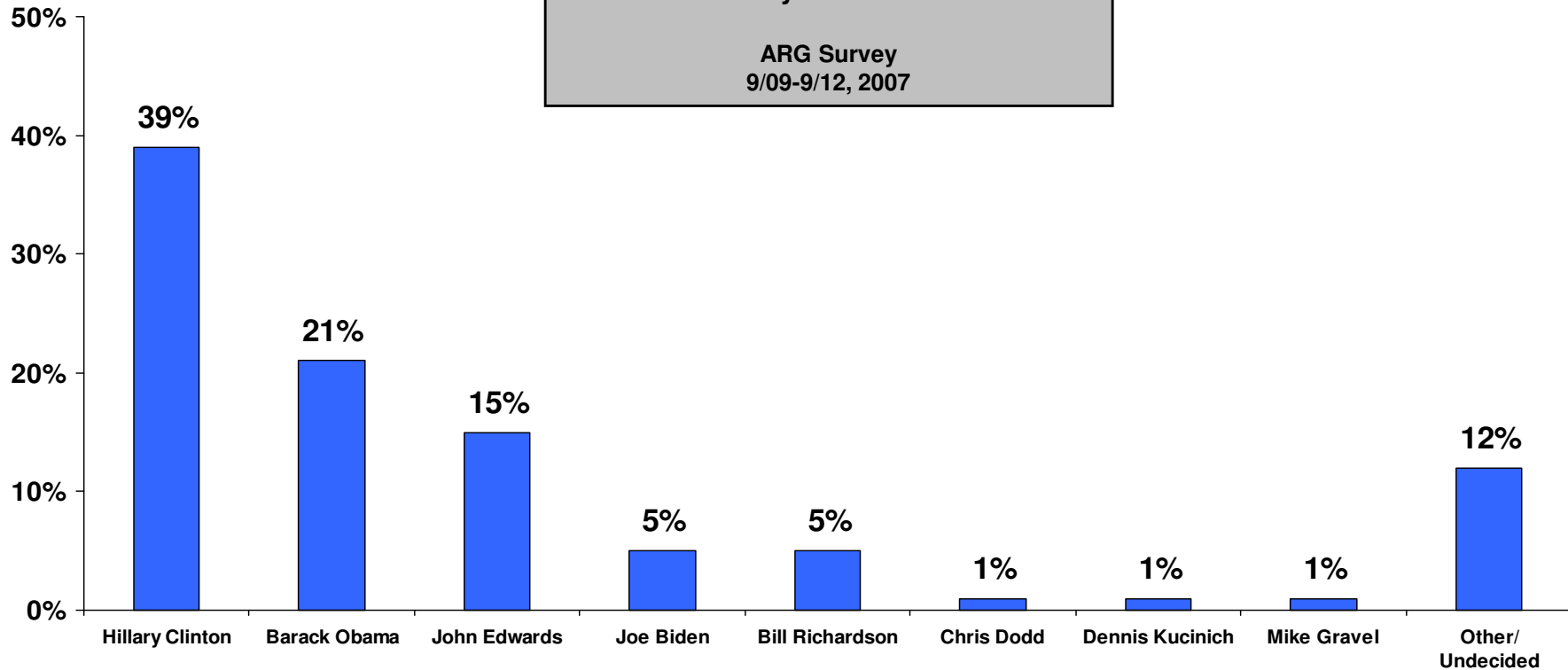
Do you approve or disapprove of the way Democrats in Congress are handling the situation in Iraq?
CBS News Survey
9/14-9/16, 2007



Election Monitor Perspective: Democratic Presidential Nomination

Which of these candidates would you be most likely to support for the Democratic nomination for President in the year 2008?

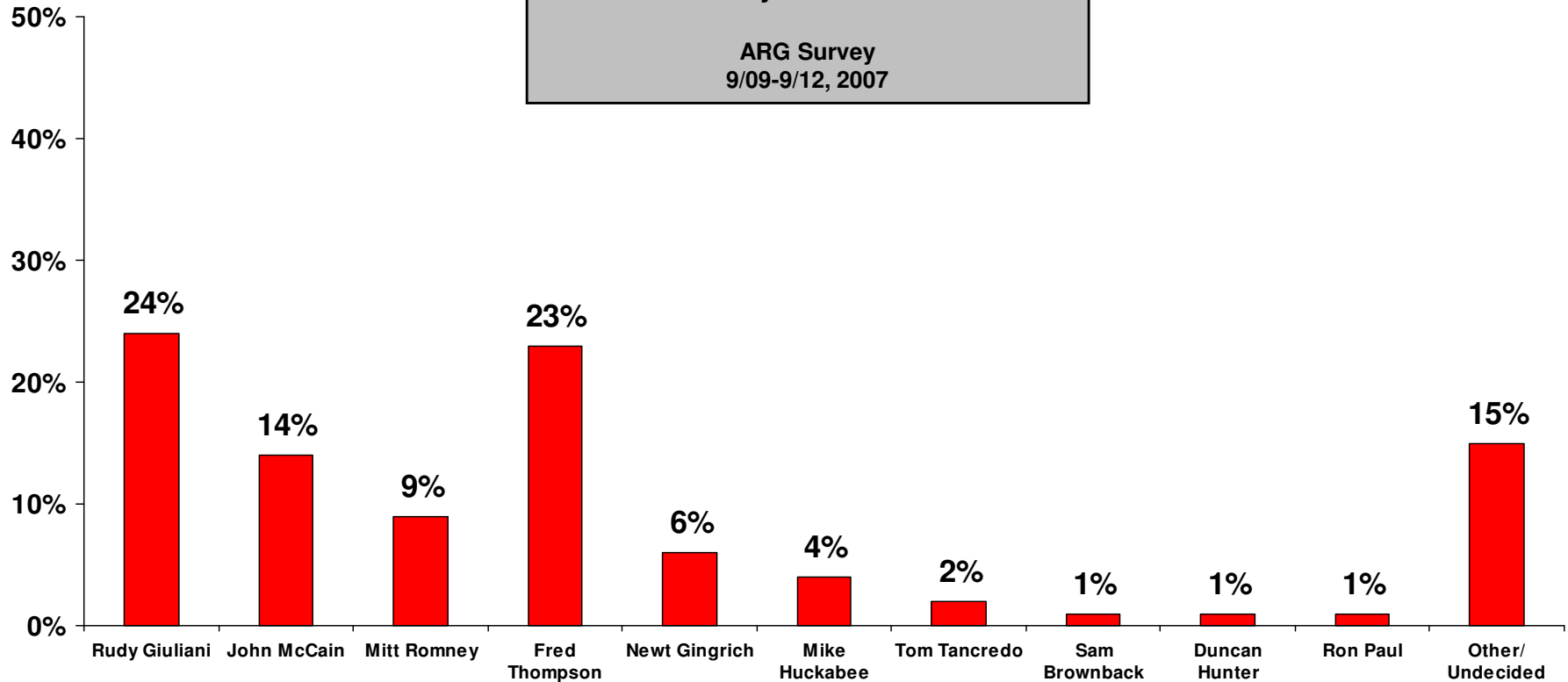
ARG Survey
9/09-9/12, 2007



Election Monitor Perspective: Republican Presidential Nomination

Which of these candidates would you be most likely to support for the Republican nomination for President in the year 2008?

ARG Survey
9/09-9/12, 2007



LCG

Election Monitor

LCG Election Monitor

2008 Primary Head-to-Head Outlook

2008 Democratic Primary National Horserace



Hillary Clinton



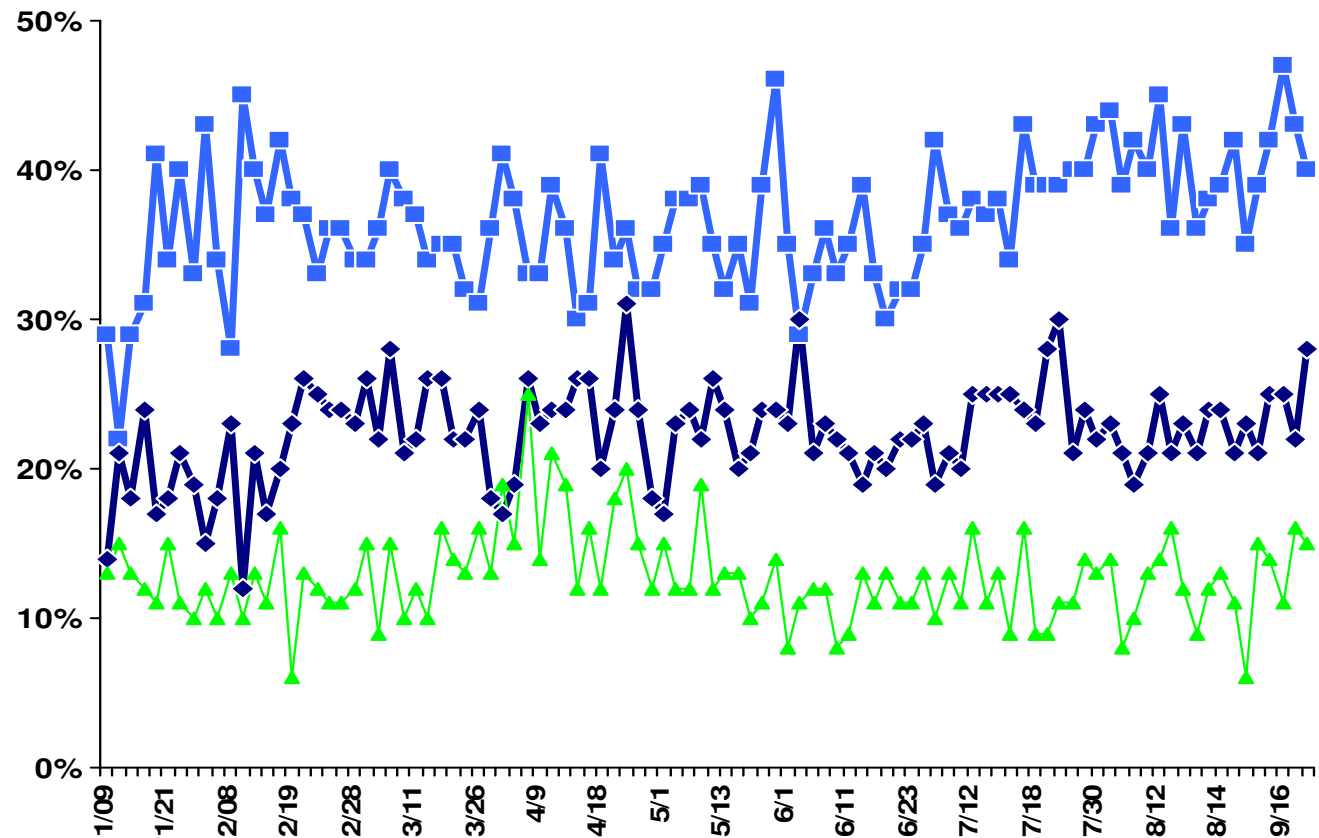
Barack Obama



John Edwards



| LCG Average | Most Recent 3 Polls |
|-----------------|---------------------|
| Hillary Clinton | 43% |
| Barack Obama | 25% |
| John Edwards | 14% |



2008 Iowa Democratic Caucus Horserace



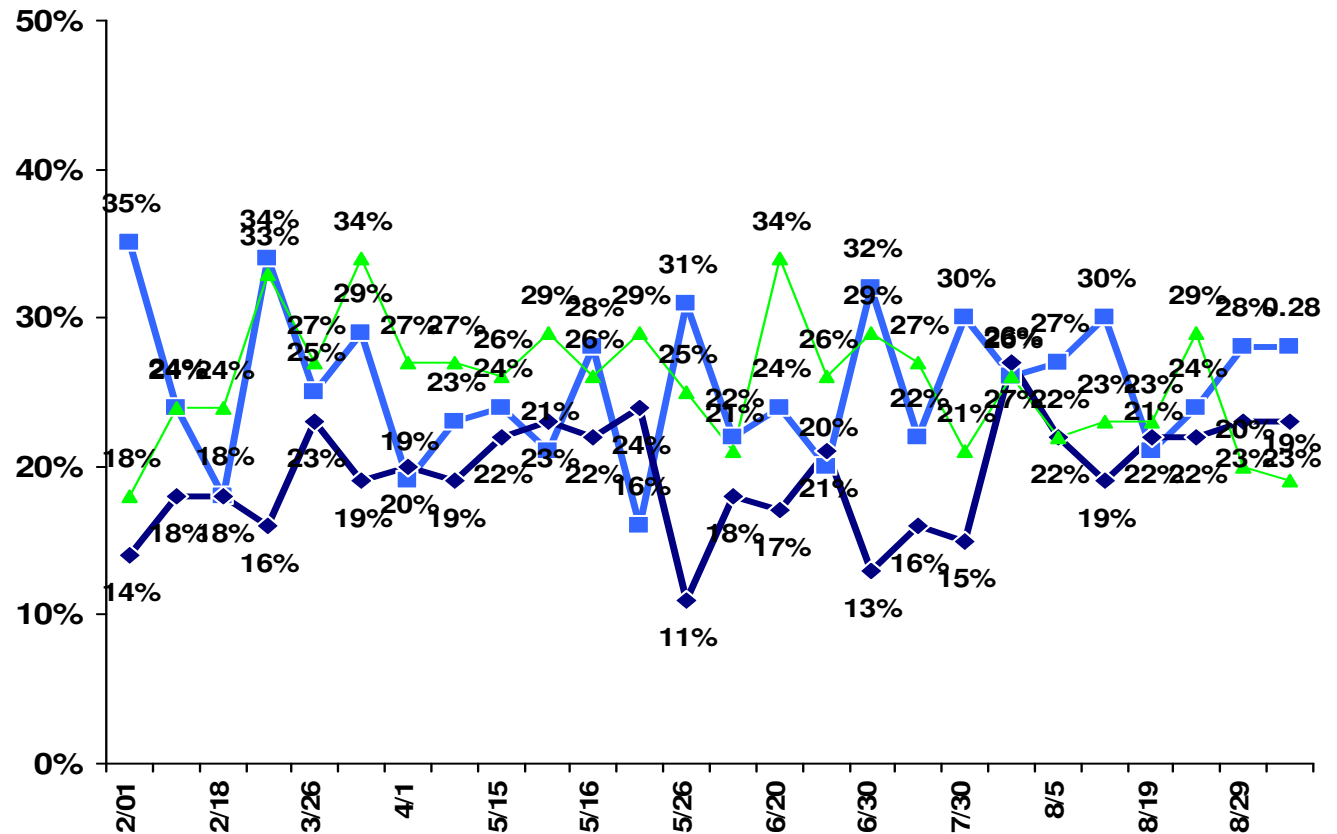
Hillary Clinton



Barack Obama



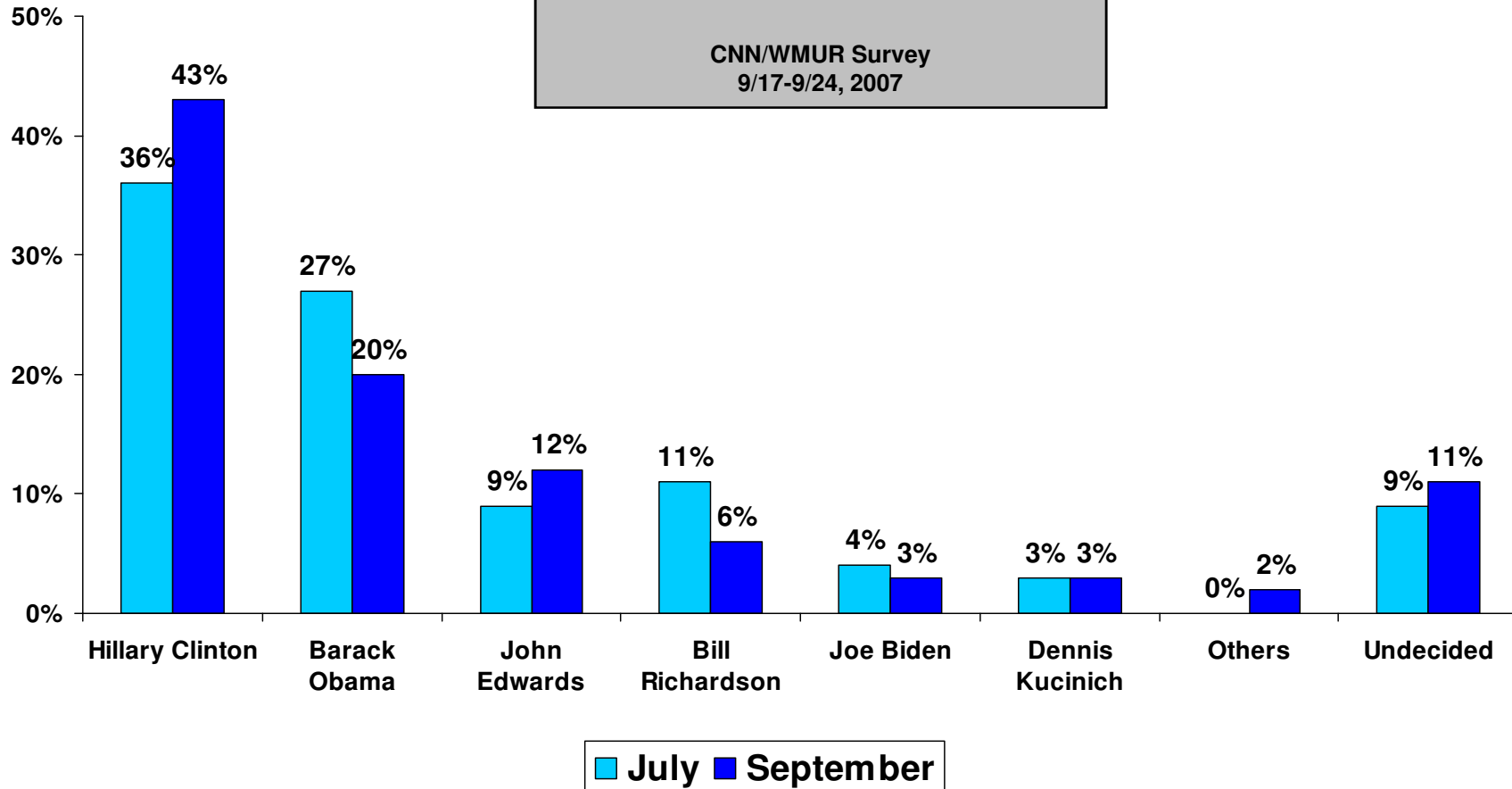
John Edwards



New Hampshire Democratic Primary: Most Recent Results

If the Democratic primary for president were held today, which of the following would you support for the Democratic nomination?

CNN/WMUR Survey
9/17-9/24, 2007



2008 New Hampshire Democratic Primary Horserace



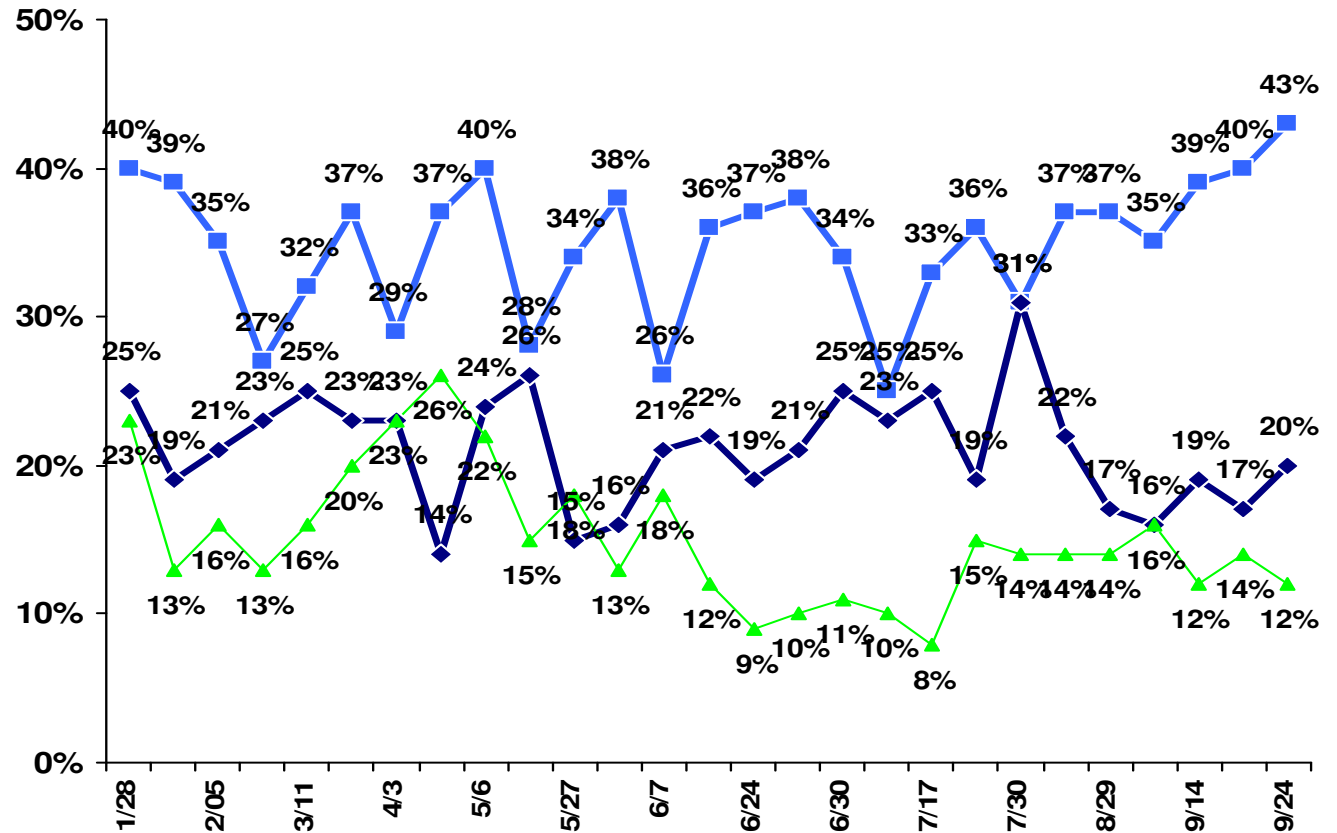
Hillary Clinton



Barack Obama



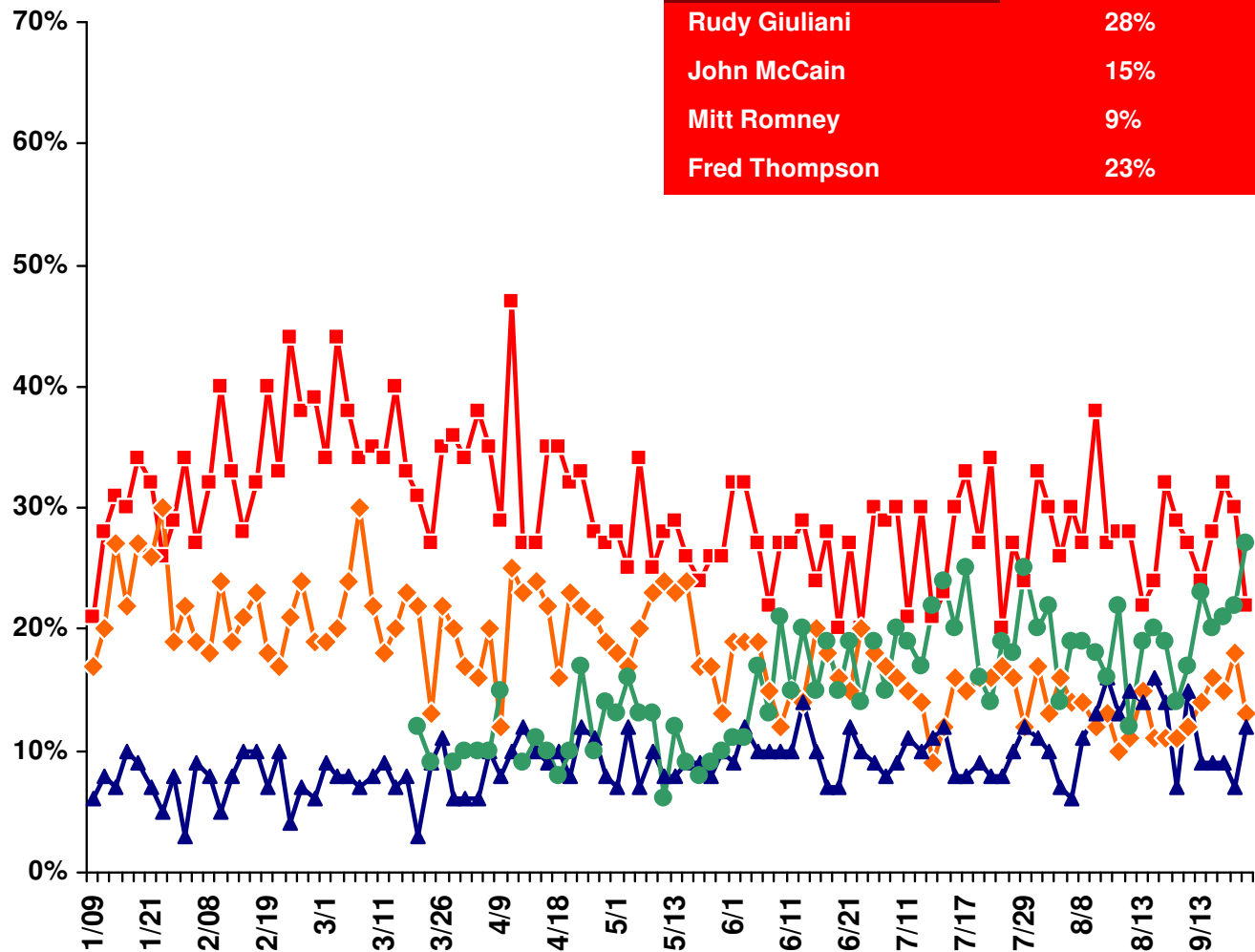
John Edwards



2008 Republican Primary National Horserace

| | |
|---|---|
|  |  |
| Rudy Giuliani | John McCain |
|  |  |
|  |  |
| Mitt Romney | Fred Thompson |
|  |  |

| LCG Average | Most Recent 3 Polls |
|---------------|---------------------|
| Rudy Giuliani | 28% |
| John McCain | 15% |
| Mitt Romney | 9% |
| Fred Thompson | 23% |



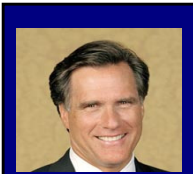
2008 Iowa Republican Caucus Horserace



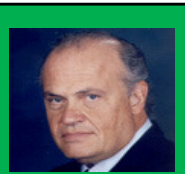
Rudy Giuliani



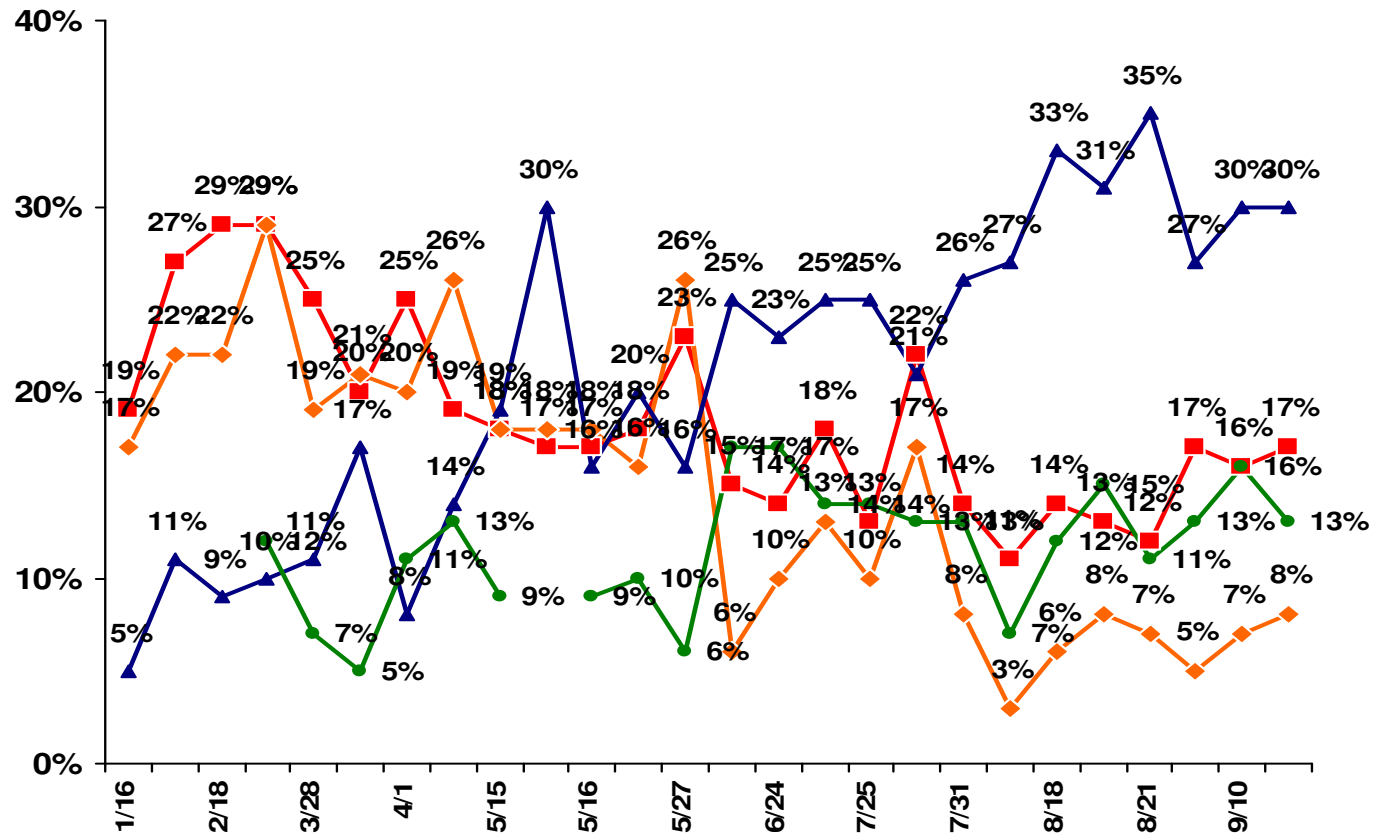
John McCain



Mitt Romney



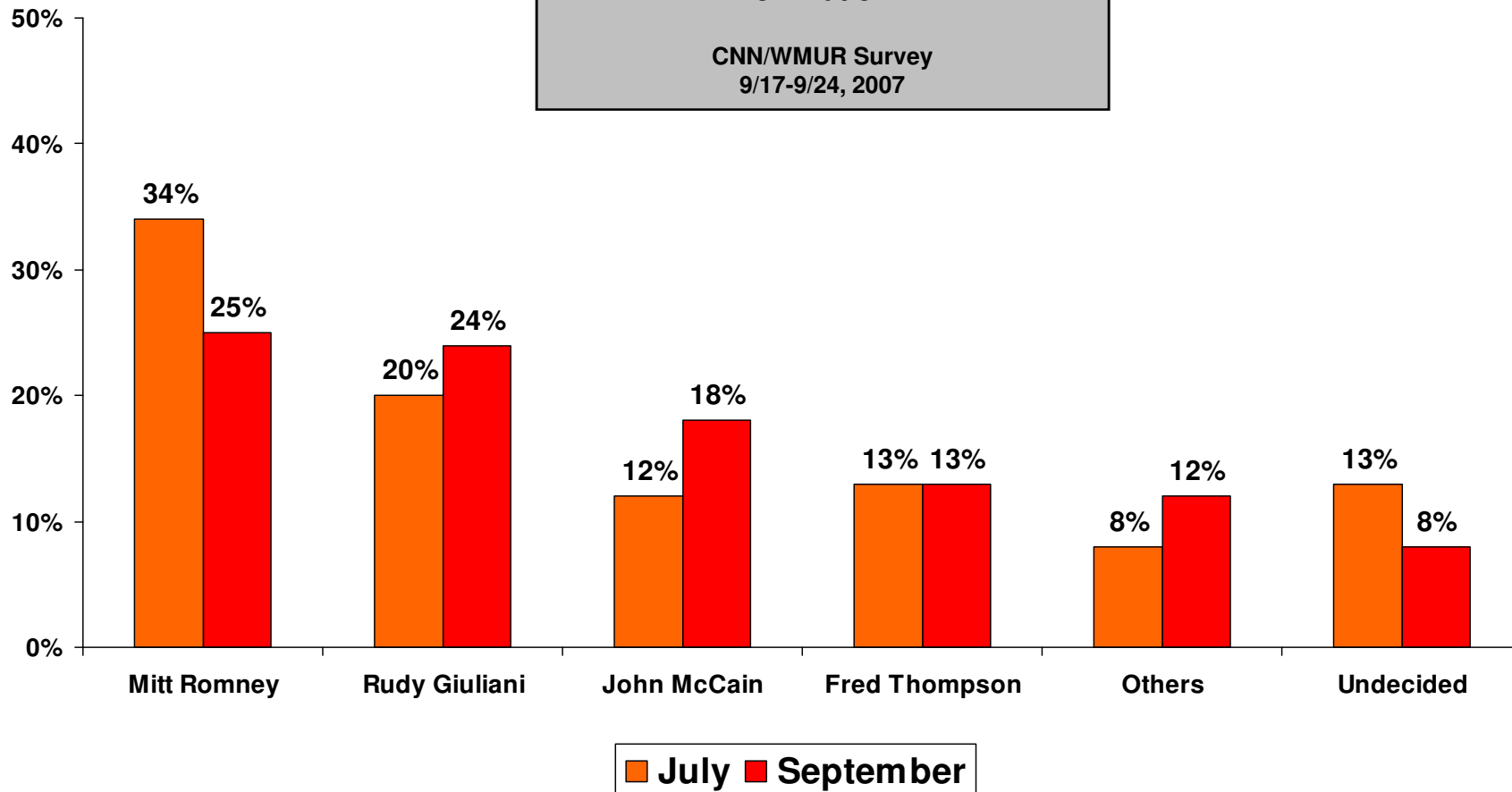
Fred Thompson



New Hampshire Republican Primary: Most Recent Results

If the Republican primary for president were held today, which of the following would you support for the Republican nomination?

CNN/WMUR Survey
9/17-9/24, 2007



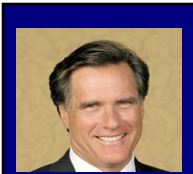
2008 New Hampshire Republican Primary Horserace



Rudy Giuliani



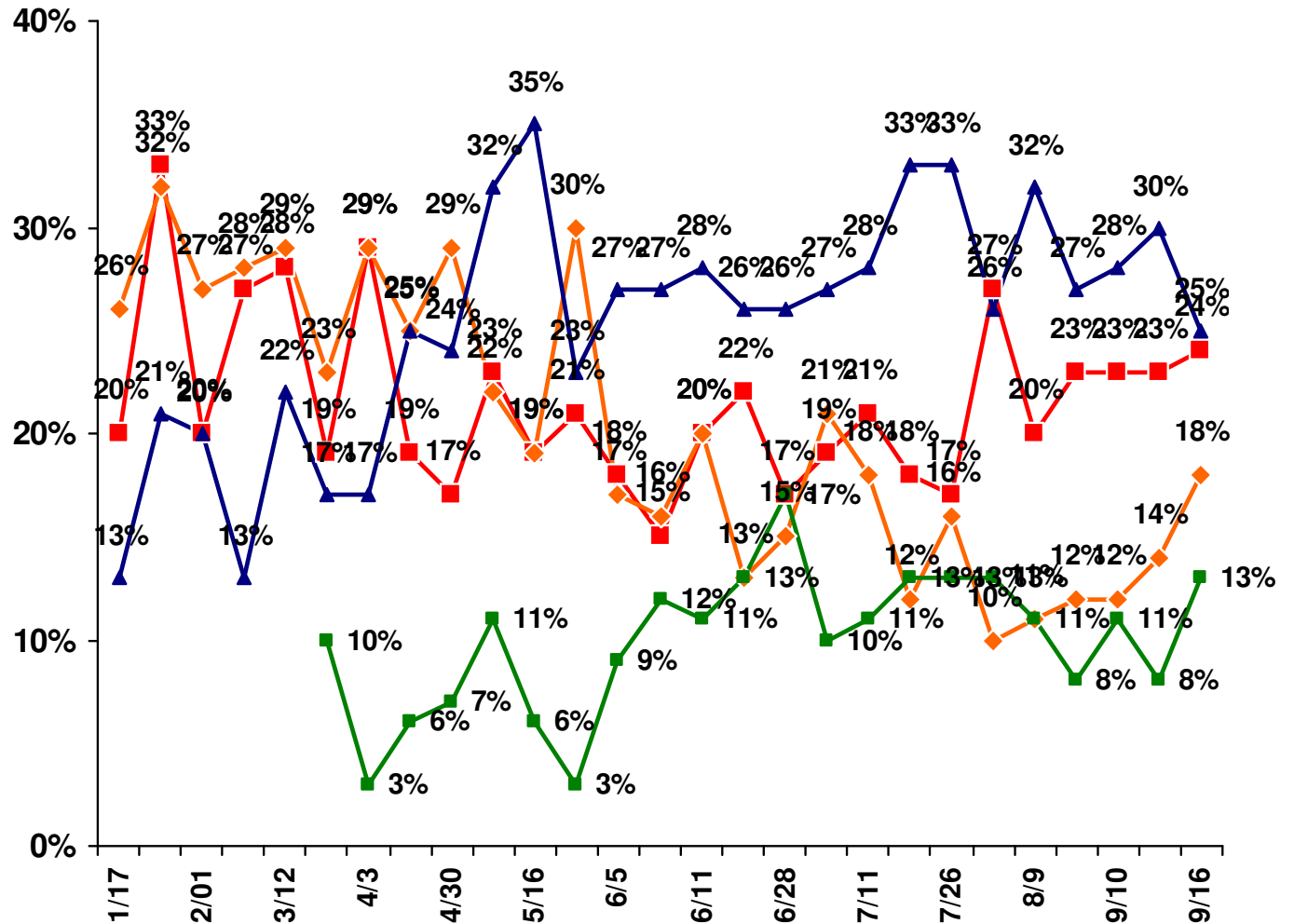
John McCain



Mitt Romney



Fred Thompson



Lombardo Consulting Group

The LCG Election Monitor is a compilation and analysis of various publicly-available surveys pertaining to selected political and policy-related issues including but not limited to:

- ABC News/Washington Post
- American Research Group
- Associated Press/Ipsos
- CBS News
- CNN
- Fox News/Opinion Dynamics
- Gallup
- Annenberg Election Survey
- Newsweek
- The Pew Research Center
- Time
- USA Today

Data updated daily